

Section VII - Skylark Content

This is a new section of the User's Guide being developed to discuss the various features of Othernet Content. It will provide more information regarding how the App Icons work, and what they provide. To access Skylark Content, you only need to logon as Guest shown in Fig. 8.



Fig. 39 Skylark's 15 Applications Icons

File Manager -

VOA News Summary Audio Feed

Forum members @Cheaha and @caveman99 developed a method of providing an automatic Daily 5 Minute VOA audio news feed. You must open the *File Manager Icon* and cursor down to *Uploads* to find it. Select the audio/mpeg file you want and play it.

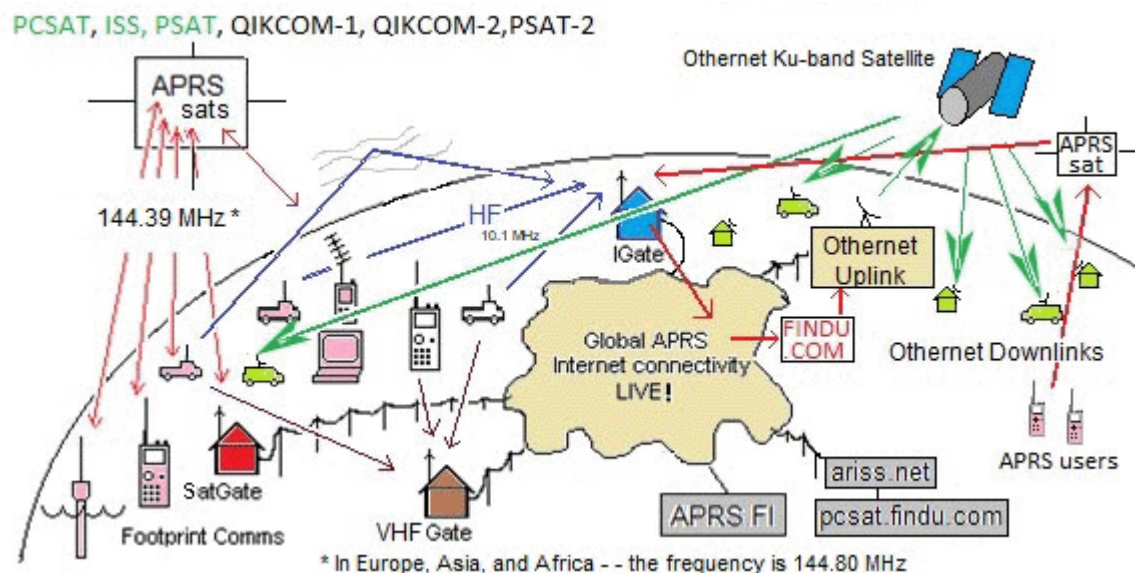


Location of Daily VOA 5 Minute News Summaries

Messages -

Automatic Packet Reporting System (APRS) Function in Skylark

As in previous versions of the Skylark operating system, reception of Automatic Packet Reporting System (APRS) messages continues. Licensed amateur radio operators can send messages to Othernet to be broadcast if they include the word OUTNET or OTHER (both case sensitive) anywhere in the body part of their message. If a ham is able to get the message to an iGate, then Othernet takes it and relays it over both beams (North America and Europe). All Othernet users can read these messages - - you don't need to be a ham to receive and read the messages.

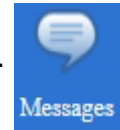


Non-APRS General Messages

In your Messages Icon you'll now see a few strange, non-APRS messages. Those were sent directly from Othernet Headquarters.

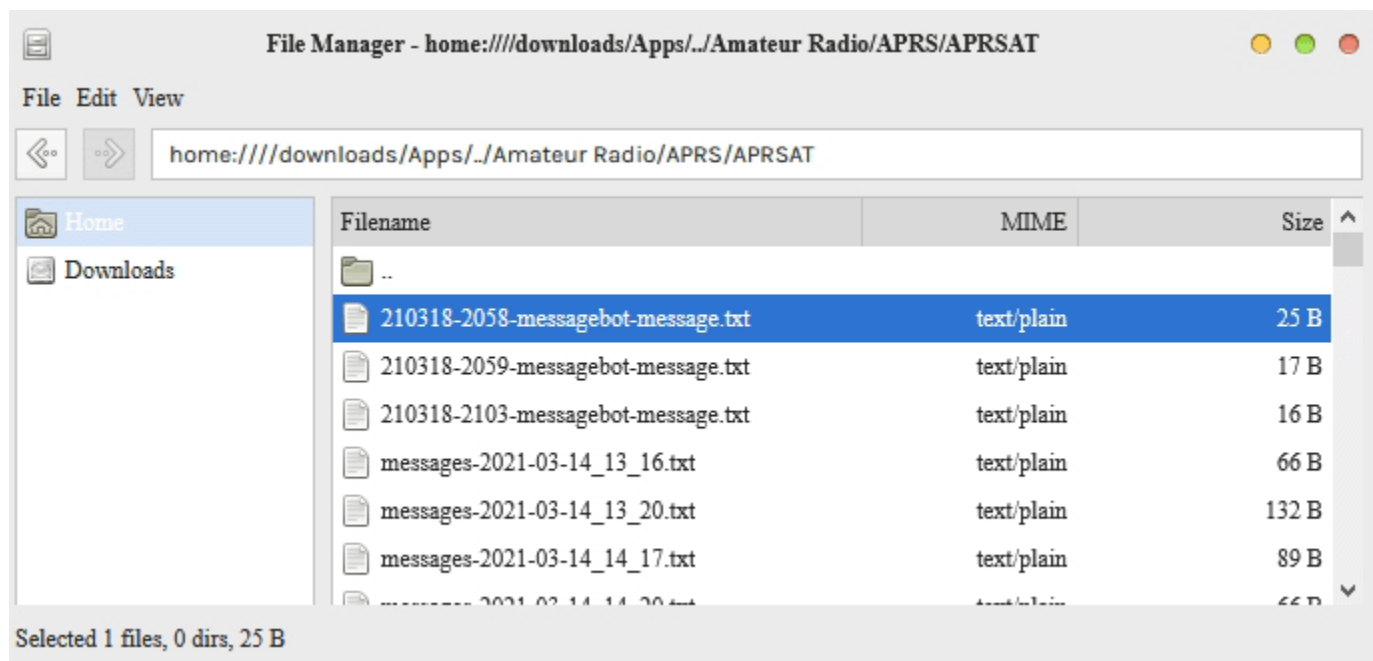
This is how it works: Create a new topic on the Forum Page <https://forums.othernet.is/> On the Forum page, select the category MESSAGES. Enter your message in the title of the topic. The character limit for titles is 200 characters, so that is the maximum length of your message. Add a period (or any random character) to the body of the text. The body of the topic is not broadcast.

Wait about a minute, maybe two. Check the Messages App Icon on Skylark.



Messages			
Date	Time	From	Message
3/19/2021	8:36:00 PM	thomslik from the forums, not via ...	thomslik from the forums, not>This new message feature is great!
3/19/2021	7:49:00 PM	Cheaha from the forums, not via A...	Cheaha from the forums, not>Finally got my Bullseye LNB. Let's see if
3/19/2021	3:50:00 PM	KD4NFS-8 via APRS	KD4NFS-8>RV4P8P,WIDE1-1,WIDE2-2,qAR,W4LCO-1:'mPl XR/^"3
3/19/2021	3:50:00 PM	KD4NFS-8 via APRS	KD4NFS-8>RV4P8P,WIDE1-1,WIDE2-2,qAR,W4LCO-1:'mPl BR/^"3
3/19/2021	3:50:00 PM	KD4NFS-8 via APRS	KD4NFS-8>RV4P8P,WIDE1-1,WIDE2-2,qAR,W4LCO-1:'mPl!!~R/^".

Your username is appended to the message. You can also look at the following directory under File Manager: **home:///downloads/Apps/./Amateur Radio/APRS/APRSAT**



After a message is broadcast, the bot will mark the topic as closed. The topic is also marked as unlisted, so that messages do not overload the main forum page.

News -

The News delivered by Othernet originates in Real Simple Syndication (RSS) feed from various news organizations. Currently, Othernet is including 16 different feeds in 5 different languages. Among them are Al Jazeera, BBC, Deutsche Welle, Voice of America, and Associated Press. Surprisingly, many stories are so new, you won't have heard them on your local radio or TV.

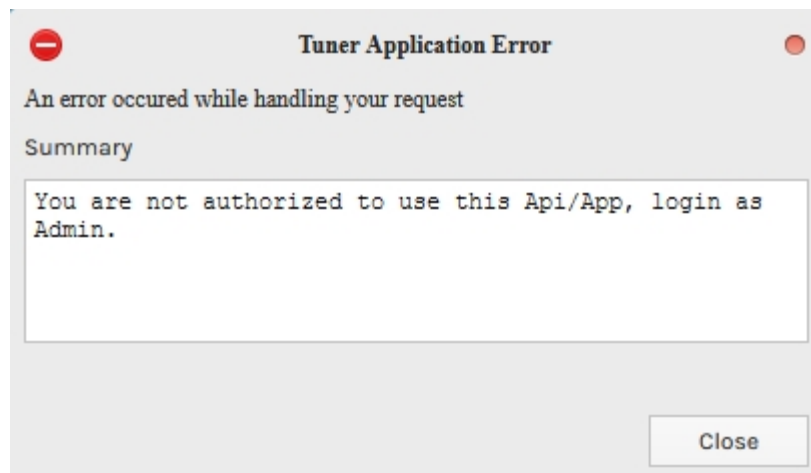


Sample News Feed

Tuner -

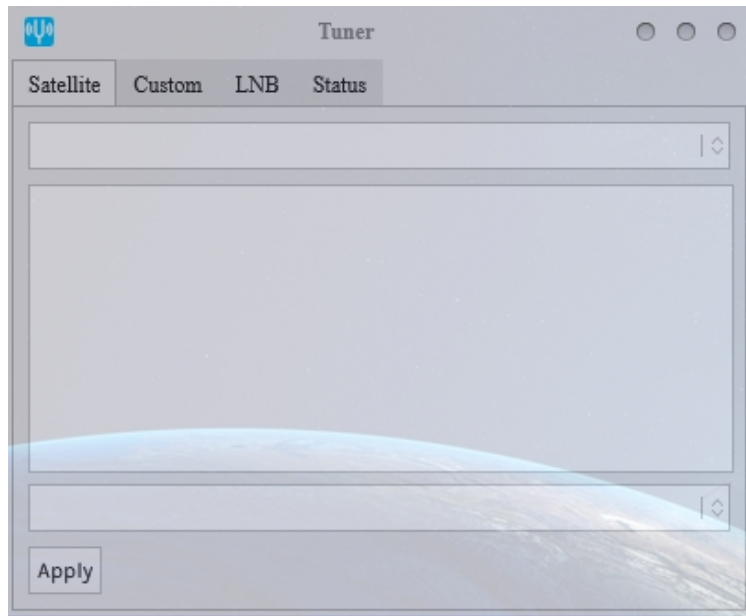
Viewing the Tuner App When Using Logon Guest

When looking at the Tuner App Icon using logon **Guest**, you will get this Tuner Application Error message:

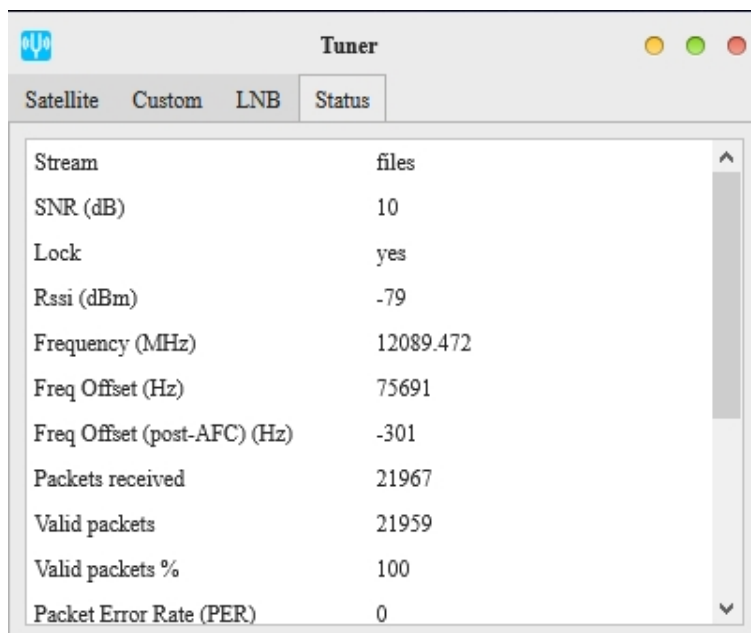


Tuner Application Error Message

Select **Close** and you will see a grayed out TABS in the Tuner App. If you click on the Satellite, Custom or LNB TABS, they will all appear empty. However, if you select the Status TAB, it will show current Tuner information..



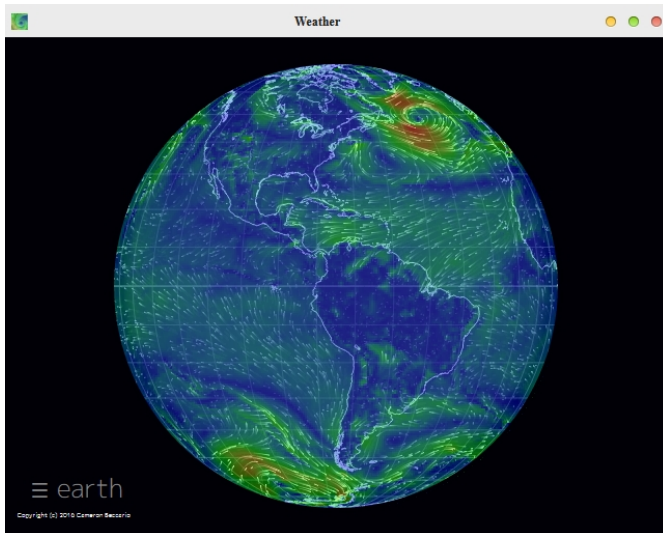
The Tuner App appears grayed out, but if you select the Status TAB you will get current Tuner information



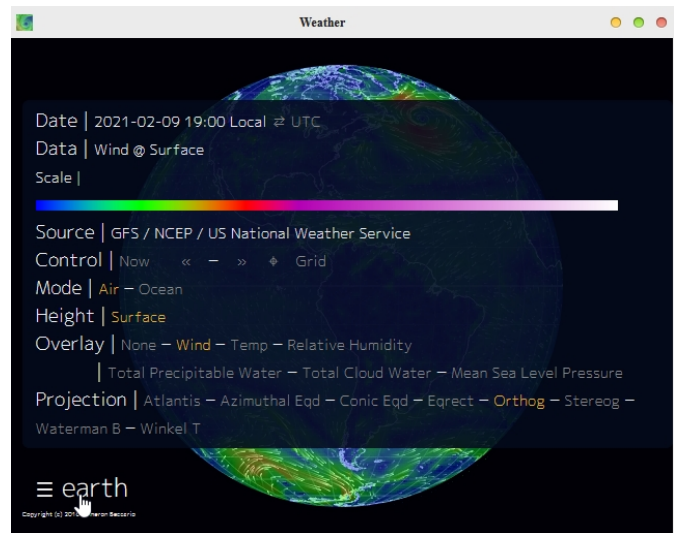
The Status TAB will display current Tuner Information

Weather -

National Oceanographic and Atmospheric Administration (NOAA) world wide weather is reported in the Weather Icon. The source is the *GFS / NCEP / US National Weather Service*. The data is refreshed two times per day. To see weather in your location, move your mouse pointer into the earth and hold down the right mouse button to rotate the globe. If you have a touch screen, you can touch the globe and rotate it with your finger, and zoom the display by squeezing open 2 fingers on the screen or touch pad.

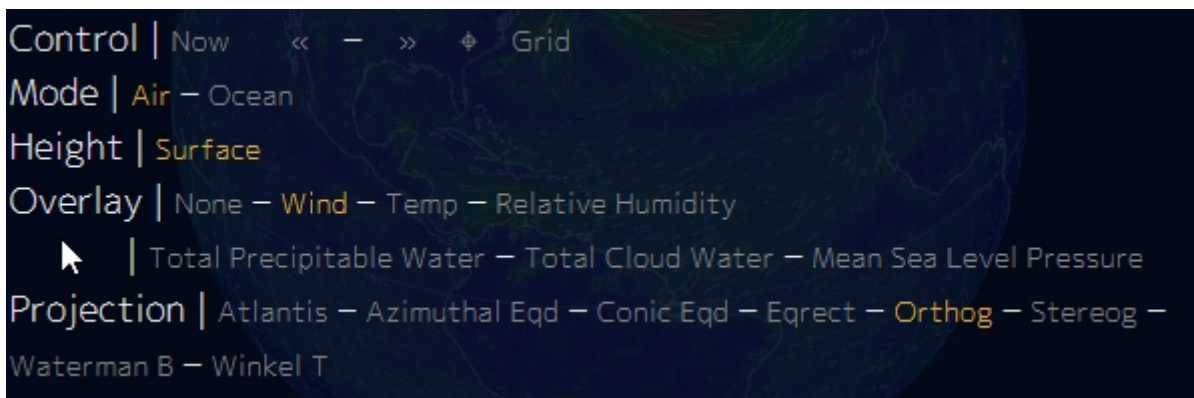


Initial Weather Image of Active Weather



Detail Revealed when the EARTH Button is Pressed

When you click on the EARTH Button on the lower left of the screen, you will be sent to a default view, but can change it as necessary - -



What's New -

Wikipedia -